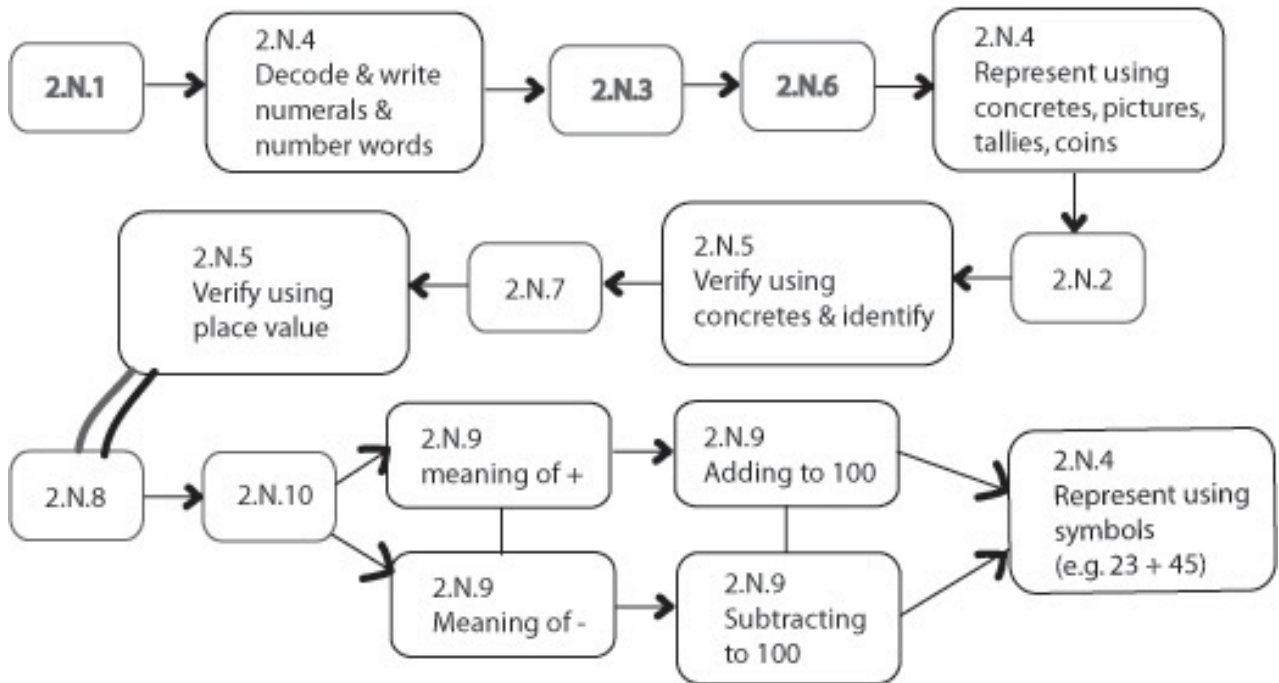


## Grade 2 Number strand CASH map



### Comments:

- Each cell of the CASH map refers to an outcome or part of an outcome. At least one lesson (consisting of a well-sequenced series of activities) is required to develop the outcome/part of an outcome for each cell.
- There are two bundles: (1) a conceptual bundle focussing on place value (the critical outcome of this map) and (2) an arithmetic bundle. Note that within the arithmetic bundle, the addition path or the subtraction path are interchangeable in terms of which to develop first.
- 2.N.1 was not unpacked (split into parts) because this outcome is a continuation of grade 1. However, it could be split into counting forwards and counting backwards.
- 2.N.4 (decode & write numerals & number words), 2.N.4 (Represent using concretes, pictures, tallies, coins), 2.N.4 (Represent using symbols) is split into three parts primarily because the parts are conceptually different from each other. As well, the part 'Represent using number sentences' can only be developed after students have had experience with number sentences involving 2-digit numbers (outcome 2.N.9).
- 2.N.5 (verify using concretes & identify), 2.N.5 (verify using place value) is split into two parts for sequencing reasons. Students cannot verify using place value until they understand place value (2.N.7).



2.N.9 is split into two paths because addition and subtraction (while related) are quite different arithmetic operations. Each path is split into meaning and doing arithmetic. While the meaning of addition and subtraction was developed in grade 1, it is wise to revisit these meanings separately to better strengthen understanding of them.